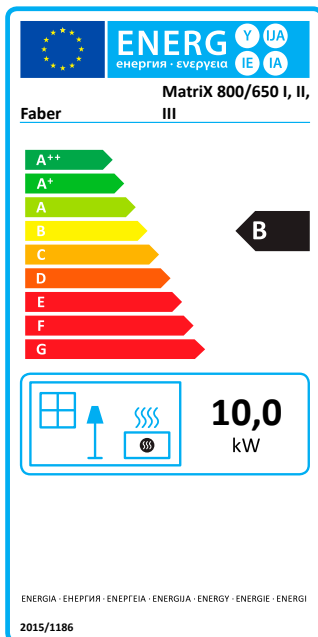
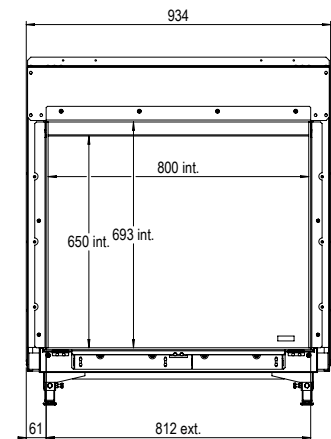
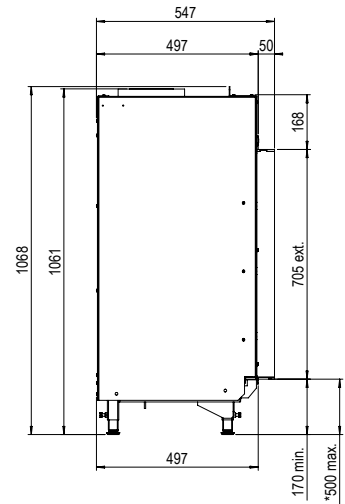
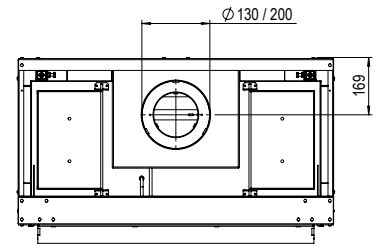


# MatriX | 800/650 I



## Specifications MatriX 800/650 I

Type	Built-in
Model	Frontmodel
Exterior dimensions WxHxD in mm	934 x 1068 x 547
Fire display WxHxD in mm	800 x 650
System	Log Burner 2.0®
Decoration	Log set
Back walls	Smooth steel
Remote	ITC remote
Power (kW)	10,0
Operating system	Honeywell
Energy label	B

### OPTIONS

- Glass back wall black
- Anti-reflective glass
- Symbio Module
- Wall bracket
- Adjustable legs

Depth frame 100mm will be available again in 2021. Faber will inform you when the frame becomes available in due course.

There is **so much to tell...**

For more information, please take a look at the website

[www.faberfires.com](http://www.faberfires.com)